

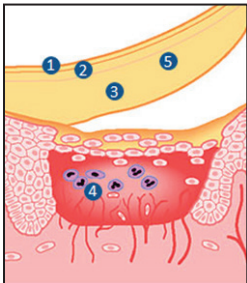
# DUODERM®

## APPLYING DUODERM® EXTRA THIN CGF DRESSING

1. Wash your hands
2. Clean and rinse the wound
3. The area must be completely dry before applying the bandage
4. Apply **without** Vaseline
5. Measure the wound to select (or cut) the appropriate dressing size, allowing a small overlap on the intact skin around the whole wound.
6. You may want to put a waterproof bandage over it, so it stays nice for the three days
7. Leave on for three days then re-apply new DuoDERM®

## DUODERM® DRESSINGS SUPPORT GENTLE WOUND MANAGEMENT

On contact with a moist wound surface, DuoDERM® dressings form a gel that creates an optimal moist wound healing environment.



1. An outer film provides a waterproof barrier over the dressing.
2. The foam layer is designed to provide both thermal and mechanical protection.
3. A honeycomb matrix of hydrocolloid particles absorbs exudate to form a soft, moist gel.
4. The dressings keep nerve endings moist, which helps to provide relief from discomfort.
5. DuoDERM® Dressings can be worn continuously for up to three days unless they are uncomfortable, there is leakage, or there are clinical signs of infection.

**DUODERM® IS AVAILABLE FOR PURCHASE AT VALLEY SKIN INSTITUTE**



## PRODUCTS



Product available online and often at Walmart

